

Zwischenflansch- Plattenschieber

weichdichtend

Baulänge nach DIN EN 558-1 Reihe 20



CTV Armaturen & Penstocks GmbH

PN 10 - PN 2,5 aus Gusseisen mit Kugelgraphit nach EN-GJS-400-15

Knife Gate Valve

resilient seated

face to face length acc. to DIN EN 558-1 series 20

PN 10 - PN 2,5 of ductile cast iron acc. to EN-GJS-400-15

DN 50 - DN 1200



05-1012001

Zwischenflansch-Plattenschieber

Knife Gate Valve



CTV Armaturen & Penstocks GmbH

Verwendungsbereich: Wasser und Abwasser

Range of application: water and waste water

Nennweite Size DN	Pressure rating Pressure rating PN	Wasser-Prüfdruck in bar Hydrost. test pressure in bar		Zulässiger Betriebsdruck in bar Admissible working pressure in bar bis 70°C / up to 70°C
		Gehäuse / Body	Sitz / Seat	
50 - 300	10	15	10	10
350 - 400	8	12	8	8
500 - 600	6	9	6	6
800 - 1200	2,5	3,75	2,5	2,5

Im Auftragsfall bitte Betriebsverhältnisse angeben.

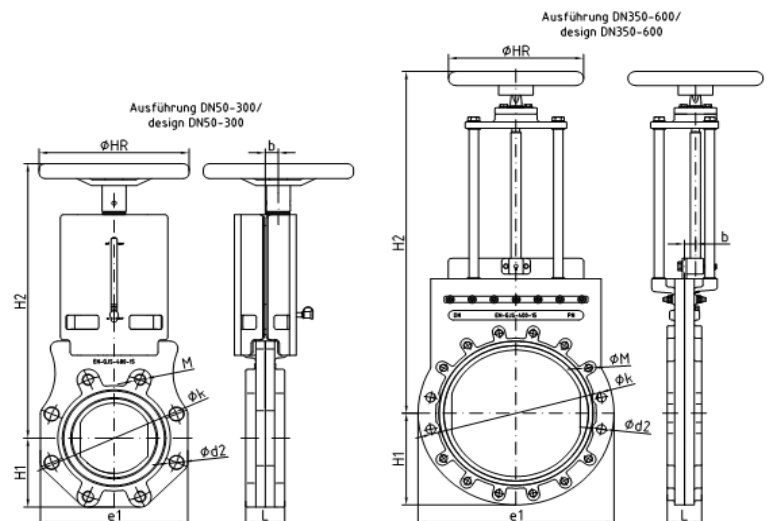
In case of order please specify the working conditions



Werkstoffe / Zubehör, Materials / Equipment

Katalog-Nr. / Catalogue No.	05-1012001
Gehäuse / Body	GGG nach EN-GJS-400-15 / GGG acc. to EN-GJS-400-15
Platte / Gate	Chromstahl 1.4301 oder 1.4571 / Stainless steel 1.4301 or 1.4571
Profildichtung im Gehäuse / Resilient profile seal	Ramie Packung / Ramie packing
U-Profildichtung / Sealing element in the body	NBR / NBR
Spindel / Stem	Chromstahl 1.4021 / Stainless steel 1.4021
Stehbolzen / Tie rods	Chromstahl 1.4021 / Stainless steel 1.4021
Spindelmutter / Stem nut	Bronze / Bronze
Schrauben und Muttern / Bolts and nuts	Chromstahl A2 / Stainless steel A2
Oberflächenschutz / Corrosion protection	Epoxy-pulverbeschichtet RAL 5015 / Epoxy powder coated RAL 5015
Handrad / Handwheel	Stahl, schwarz lackiert / Steel, black coated

Nennweite Size	Baulänge nach Face to face length acc. to DIN EN 558-1 Reihe 20 / Series 20	Bauhöhe Height	Gewicht Weight	Volumen Volume
DN mm	L mm	H mm	kg	m ³
50	43	325	20	0,01
65	46	352	21	0,01
80	46	382	23	0,01
100	52	422	25	0,02
125	56	459	26	0,02
150	56	514	29	0,02
200	60	605	32	0,06
250	68	720	34	0,08
300	78	840	39	0,09
350	78	945	165	0,12
400	102	1025	220	0,20
450	114	1105	245	0,30
500	127	1280	290	0,35
600	154	1460	480	0,45
700	165	1660	620	0,60
800	190	1990	920	0,73
900	203	2150	1.150	0,86
1000	216	2320	1.350	1,15
1200	254	3500	1.600	1,30



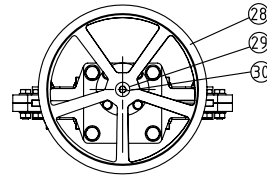
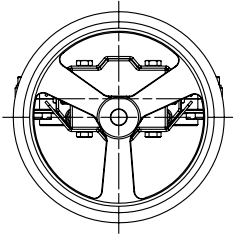
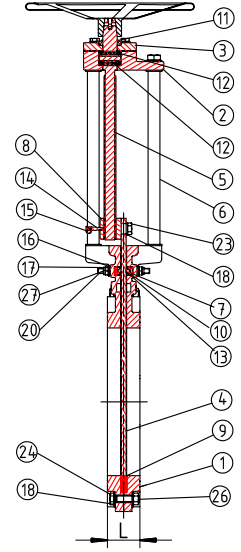
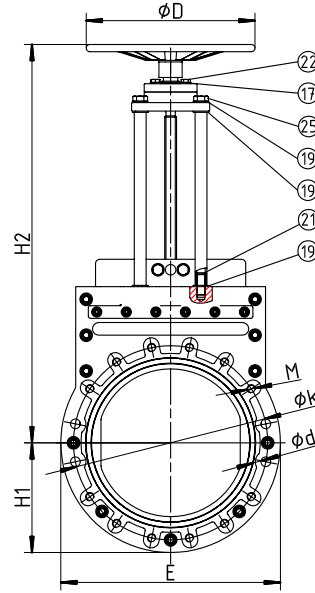
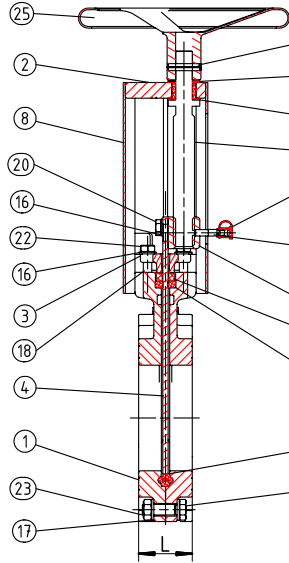
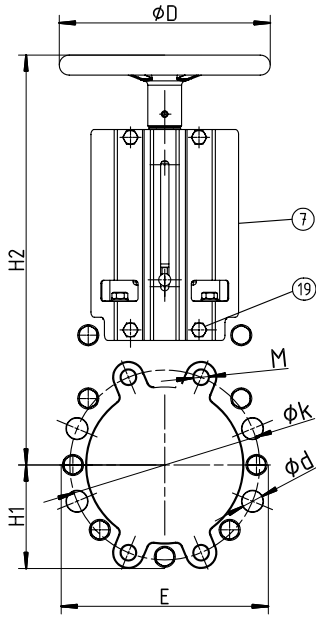
Technische Änderungen vorbehalten

We reserve the right to make technical modifications

01.03.2020 - 05-1012001

Design DN50-300

Design DN350-600



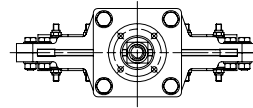
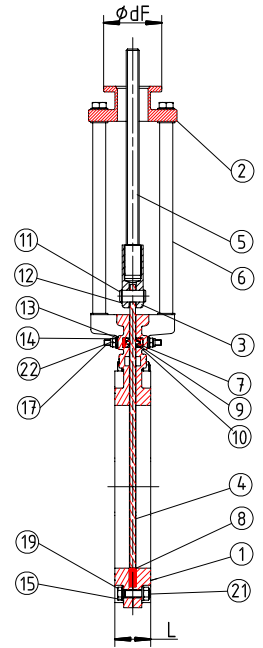
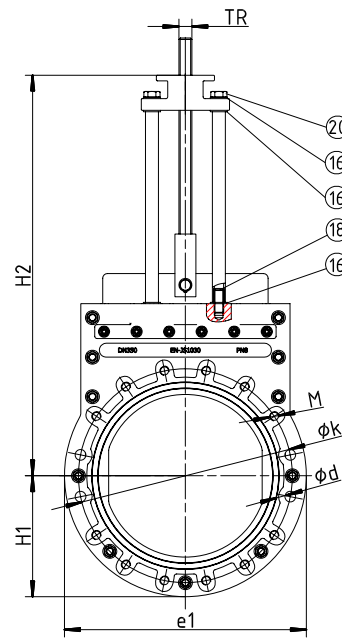
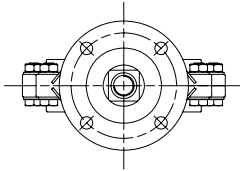
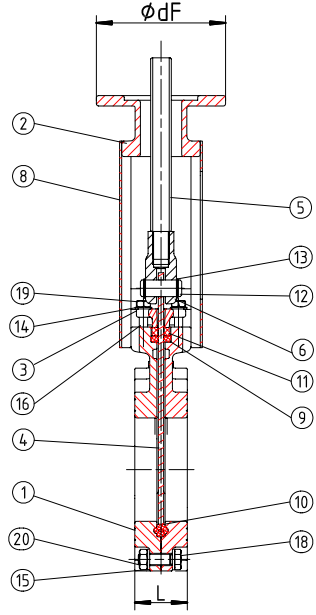
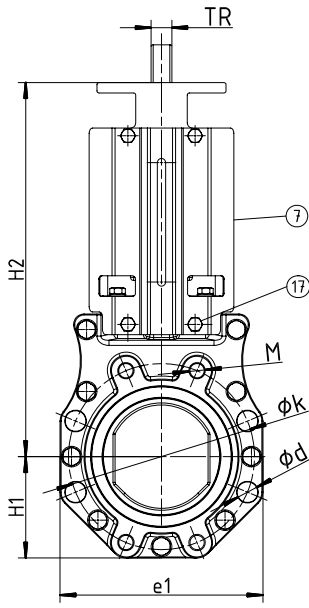
13	Washer	POM	25	Hand wheel	GGG
12	Bushing	POM	24	Pin	A2
11	Pressure plate	POM	23	Nut	A2
10	Body gasket	NBR	22	Nut	A2
9	Gasket	NBR	21	Bolt	A2
8	Side plate	A2	20	Bolt	A2
7	Side plate	A2	19	Bolt	A2
6	Stem nut	Alubronze	18	Socket screw	A2
5	Stem	1.4057	17	Washer	A2
4	Plate	1.4301	16	Washer	A2
3	Gland	GGG	15	Oiler cap	PE
2	Support	GGG	14	Oiler	Steel zincd
1	Body	GGG			
Item	Description	Material	Item	Description	Material

15	Oiler cap	PE	30	Bolt	A2
14	Oiler	Steel zincd	29	Washer	A2
13	Packing	Ramie PTFE	28	Hand wheel	Steel
12	Axial bearing	Steel	27	Nut	A2
11	Scraper	NBR	26	Nut	A2
10	Gasket	NBR	25	Bolt	A2
9	Body gasket	NBR	24	Bolt	A2
8	Stem nut	Alubronze	23	Bolt	A2
7	Pressure plate	1.4301	22	Bolt	A2
6	Rod	1.4301	21	Socket screw	A2
5	Stem	1.4057	20	Socket screw	A2
4	Plate	1.4301	19	Washer	A2
3	Cover	GGG	18	Washer	A2
2	Support	GGG	17	Washer	A2
1	Body	GGG	16	Washer	PA 6
Item	Description	Material	Item	Description	Material

DN	PN	L	E	H1	H2	ϕD	M	ϕk	ϕd	kg	Turns
50	10	43	136	70	306	200	4xM16	125	—	7	12.5
65	10	46	156	80	332	200	4xM16	145	—	2.5	16.25
80	10	46	178	90	355	200	4xM16	160	4x $\phi 19$	10	20
100	10	52	196	100	388	200	4xM16	180	4x $\phi 19$	12.5	25
125	10	56	224	115	427	200	4xM16	210	4x $\phi 19$	17.5	31.25
150	10	56	260	130	485	250	4xM20	240	4x $\phi 23$	22	30
200	10	60	317	160	590	300	4xM20	295	4x $\phi 23$	33.5	40
250	10	68	382	200	695	300	8xM20	350	4x $\phi 23$	51	50
300	10	78	430	225	790	400	8xM20	400	4x $\phi 23$	69.5	60
350	8	78	520	260	970	400	12xM20	460	4x $\phi 23$	109	70
400	8	102	580	290	1090	400	12xM24	515	4x $\phi 29$	155	67
500	6	127	715	360	1280	500	16xM24	620	4x $\phi 29$	257	83
600	6	154	780	390	1475	500	16xM27	725	4x $\phi 32$	328	100

Design DN50-300

Design DN350-600



10	Body gasket	NBR	20	Nut	A2
9	Gasket	NBR	19	Nut	A2
8	Side plate	A2	18	Bolt	A2
7	Side plate	A2	17	Bolt	A2
6	Fork lift	1.4301	16	Socket screw	A2
5	Stem	1.4057	15	Washer	A2
4	Plate	1.4301	14	Washer	A2
3	Gland	GGG	13	Closing ring	Steel
2	Support	GGG	12	Pin	A2
1	Body	GGG	11	Pressure plate	POM
Item	Description	Material	Item	Description	Material

11	Pin	A2	22	Nut	A2
10	Packing		21	Nut	A2
9	Gasket	NBR	20	Bolt	A2
8	Body gasket	NBR	19	Bolt	A2
7	Pressure plate	1.4301	18	Socket screw	A2
6	Rod	1.4301	17	Socket screw	A2
5	Stem	1.4057	16	Washer	A2
4	Plate	1.4301	15	Washer	A2
3	Fork lift	1.4301	14	Washer	A2
2	Support	GGG	13	Washer	PA 6
1	Body	GGG	12	Closing ring	Steel
Item	Description	Material	Item	Description	Material

DN	PN	L	E	H1	H2	M	φ k	φ d	TR	F (ISO 5210)	φ dF
50	10	43	136	70	280	4xM16	125	—	Tr18x4 LH	F07&F10	125
65	10	46	156	80	310	4xM16	145	—			
80	10	46	178	90	330	4xM16	160	4x φ 19	Tr20x4 LH		
100	10	52	196	100	365	4xM16	180	4x φ 19			
125	10	56	224	115	410	4xM16	210	4x φ 19	Tr24x5 LH	F10	
150	10	56	260	130	475	4xM20	240	4x φ 23			
200	10	60	317	160	580	4xM20	295	4x φ 23	Tr26x5 LH		
250	10	68	382	200	670	8xM20	350	4x φ 23			
300	10	78	430	225	760	8xM20	400	4x φ 23	Tr28x5 LH	F10&F14	175
350	8	78	520	260	885	12xM20	460	4x φ 23	Tr30x6 LH		
400	8	102	580	290	1005	12xM24	515	4x φ 29			
500	6	127	715	360	1200	16xM24	620	4x φ 29			
600	6	154	780	390	1395	16xM27	725	4x φ 32			

Knife gate valve with top flange